

Customer :

customer

Customer part :

customer part

Comment :

Comment

S1=4.03

S2=5.24

Tmax=468

Tp S2=507.0

PI=0.43

HI=73

Sample =1756.30

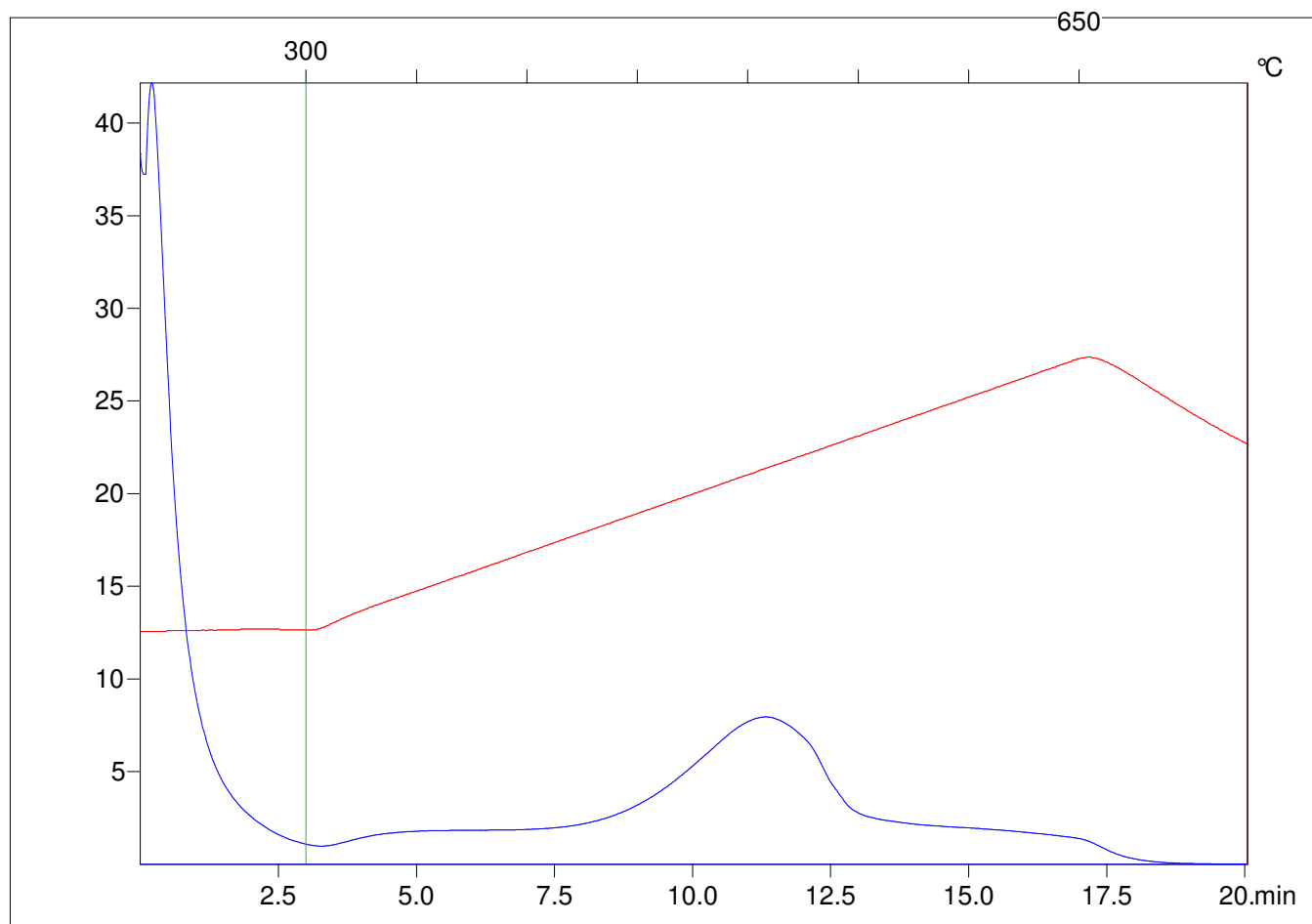
Method =Bulk Rock

Cycle=Basic

KFID(10*9)=1444

Qty =70.8

TOC=7.17



C:\VINC\PK3_1792\PK012.R00 : FID pyrolysis graphic

State

Pyro Status

Oxi Status